



(541) 791-9310

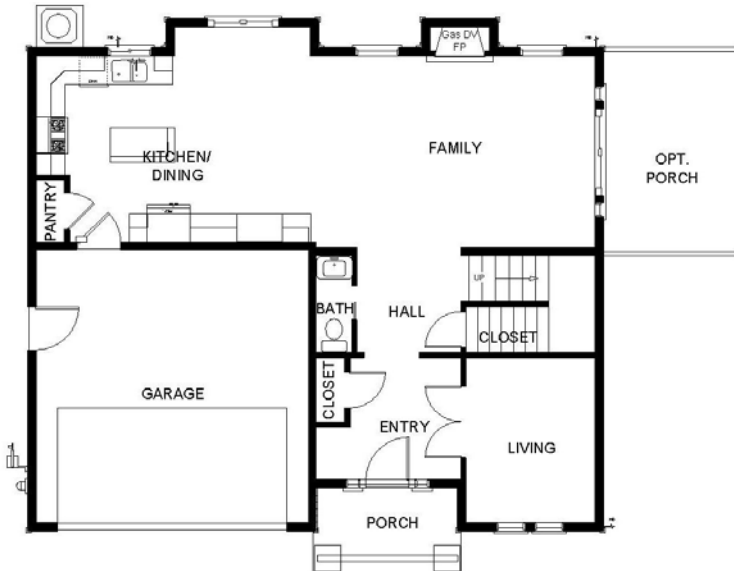
www.conserhomes.com

www.conserrealty.com

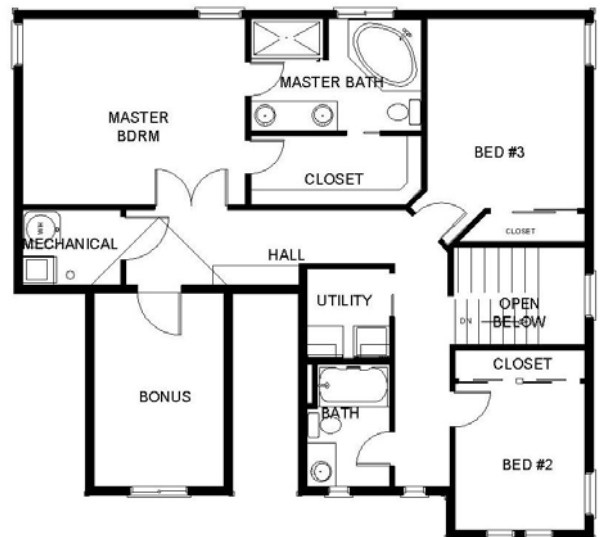
CCB #19351



The "Jacqueline," is an energy efficient "Craftsman" inspired plan. The home features 9' ceilings on the first floor, open Kitchen, Dining and Family Room, and a separate Living room for smaller "get-togethers." The Kitchen features a pantry for added storage and island for more counter space. The Dining room features an optional desk or built-in hutch for even more storage. The Master Suite offers a large walk-in closet, a corner spa tub, and large walk-in shower for convenience. The home will be certified "Earth Advantage" and "Energy Star" for reduced utility bills and increased comfort. In addition, there is an optional Bonus Room, hall linen cabinets, and a conveniently located Utility room. The home measures in at 1970 square feet with out the Bonus room, and 2112 square feet with the Bonus room option.



1st Floor



2nd Floor